

cps tv

installation manual

CPS Document 1.0



CLUB **PROPHET**
systems

about this cps document

Published by: Club Prophet Systems, Oakmont, Pa., USA

Product: CPS TV

Authors: CPS Product Development Team, CPS Support Team

Location: <https://help.cps.golf>

Version History

<i>CPS Document N.r</i>	<i>Date Issued</i>	<i>Prepared By</i>	<i>Purpose</i>
v0.1	2018-09-28	AR	Released internally
v0.2	2018-10-19	AR	For final review
v1.0	2018-11-01	AR	First release

Topics in this manual:

About This CPS Document	i
CPS TV Overview	2
Install CPS TV	4
Configure CPS TV	6
Contact CPS Support	8

cps tv overview

CPS TV is an application for Apple TV that shows who is next at the tee.

CPS TV will help prompt players to check in and will display a confirmation after they have paid. The app can display the schedules of multiple courses and can be customized with a header image and announcement text.

CPS TV is perfect for the pro shop, the driving range, the practice area, or any other place customers want to see the next tee times.

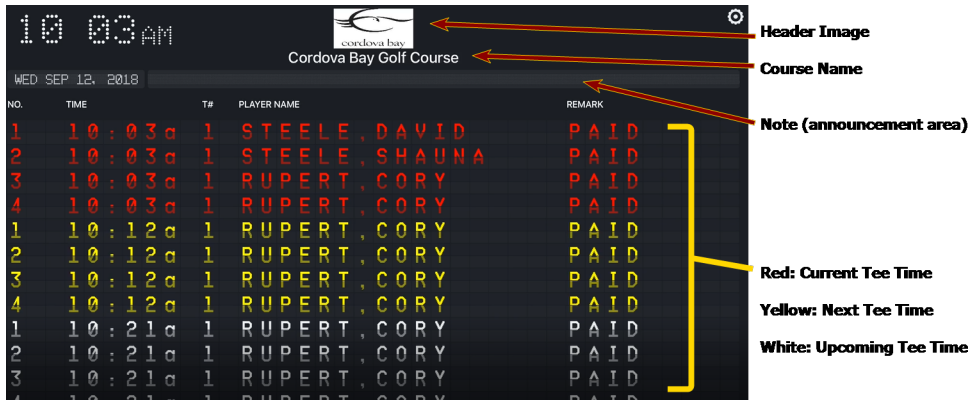
CPS TV Requirements:

- Any high-definition television with an HDMI port.
- Apple TV, 4th Generation or newer

Note: Any television installed outdoors must be equipped to withstand all weather conditions. Consult with electronics vendors on the best setup for your facility.

Once installed, CPS TV will display the first three tee times, with the earliest slot positioned at the top.

Example of a Screen Using CPS TV



Players will be listed by the name in their reservation. Players in red text are first to tee off, while those in yellow text are next.

The status of each tee time will show one of three options: Check In, Available, or Paid.

- Golfers marked Paid are ready to tee off.
- Golfers marked Check In are required to check in.
- Tee times marked Available are unreserved.

When you install and configure CPS TV, you will be able to customize several areas displayed on the screen: Header, Course Name(s), and Note. The gear icon at the top left allows you to refresh the screen.

Click the gear after changing any settings to activate them.

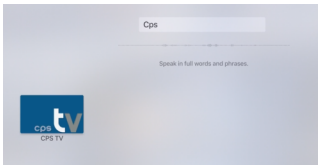
install cps tv

Get started with CPS TV by downloading the app.

Step by step:

1. Go to the App Store, and search for CPS TV.

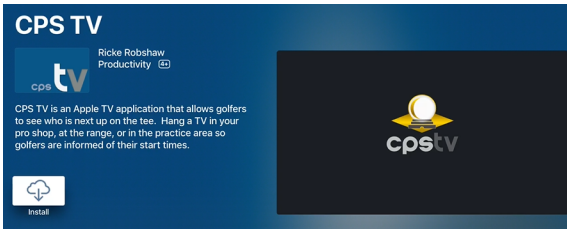
App Search screen



2. Click the **Install** icon to download the app.

When the download is complete, the Install icon will change to **Open**.

CPS TV in the App Store



3. Click the **Open** icon.

Open Icon

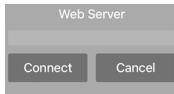


The screen will display the Web server field for the CPS API connection string.

4. In the Web Server field, enter the CPS API connection string, which is provided by the CPS Support team.

If the app successfully connects to the web server, the screen will display instructions for connecting the TV to the server.

CPS API Connection String Field



[Connect the TV](#) and configure the app according to the needs of your facility.

configure cps tv

After installing the app, the screen will display instructions for approving the TV as a terminal in POS Express. From there, you can configure CPS TV for your facility.

Step by step:

1. Open POS Express and go to **Tools > Options > Reference Tables > Terminal Information**.
2. Under Terminal Information, locate the name of the TV. Double-click on the TV's name, or select the name and click **Edit**.

Terminal Information Screen

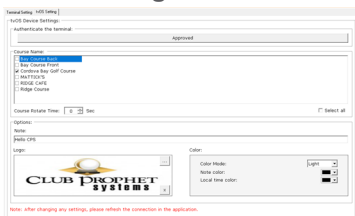
ID	TerminalName	Store	Version	Connected		1*	Add
86	Pad2 - Terminal for iPad	Restaurant		No	-	-	-
87	ITE	Golf Ops	Tag3.72 Bu46477	No	-	-	Edit
93	ITS	Restaurant	Tag3.80 Bu46469	No	-	-	Delete
103	DODDY	Restaurant	Tag3.80 Bu46761	No	-	-	-
104	JAKEDDY	Golf Ops	Tag3.80 Bu46763	No	-	-	-
69	SA's MacBook Pro - Terminal for iPad	Restaurant		No	-	-	-
94	KAE-PC	Restaurant	Tag3.80 Bu46761	Yes	-	-	-
7	Kevin - Kevin	All Stores		No	-	-	-
10	Kim - Kim	All Stores		No	-	-	-
82	KTTT	Restaurant	Tag3.70 Bu46763	No	-	-	-
73	Kittaphan's Mac - Terminal for iPad	Restaurant		No	-	-	-
70	Kromer's iPad - Terminal for iPad	Restaurant		No	-	-	-
12	Lisa - Lisa	All Stores		No	-	-	-
85	Mia - Terminal for iPad	Restaurant		No	-	-	-
81	MyCo's Mac - Terminal for iPad	Golf Ops		No	-	-	-
116	MyCo's iPad - Terminal for iPad	Restaurant		Yes	-	-	-
117	MyCo's iPad - Terminal for iPad	Restaurant		Yes	-	-	-
118	MyCo's iPad - Terminal for iPad	Restaurant		Yes	-	-	-
56	MYCOS-PC	Restaurant	Tag3.80 Bu46777	No	-	-	-
96	mycos001 - Terminal for iPad	Restaurant		Yes	-	-	-
51	mycos002 - Terminal for iPad	Restaurant		No	-	-	-
30	MYCOS003OFFICE	Golf Ops		No	-	-	-
4	Online Payment - Online Payment	All Stores		No	-	-	-
3	Online Reservation - Online Reservation	All Stores		No	-	-	-
24	PC-CEBSE	Adm'n	Tag3.70 Bu46332	No	-	-	-
27	PC-KIM	Restaurant	Tag3.70 Bu46332	No	-	-	-
23	PC-KIM-NEW	Adm'n	Tag3.70 Bu46332	No	-	-	-
25	PC-SHANE	Restaurant	Tag3.70 Bu46332	No	-	-	-
17	PROSHOPOFFICE2	Golf Ops	Tag3.70 Bu46332	No	-	-	-
29	PROSHOPOFFICE	Golf Ops	Tag3.04 Bu46120	No	-	-	-
18	PROSHOPOFFICE	Restaurant		No	-	-	-
35	Q's iPad - Terminal for iPad	Restaurant		No	-	-	-
1127	QAVIE	Restaurant	Tag3.80 Bu46778	Yes	-	-	-
100	REN	Golf Ops	Tag3.80 Bu46772	No	-	-	-

3. Select the **tvOS Setting** tab at the top of the window.
4. Click the **Approve** button under **Authenticate the terminal**.
5. Scroll down and configure other settings as needed:

- **Course Name:** Determines which course(s) to display.
- **Select all:** Option to rotate the display through all of the courses.
- **Course Rotate Time:** Number of seconds to display (for multiple courses).
- **Note:** Option to display a text announcement on the screen.
- **Logo:** Sets the header image on the screen, usually the facility's logo.

- **Colors:** Set the Note color, and set the Local Time color.

tv OS Setting Tab



6. Click the **Save** button at the bottom of the screen.
7. From the TV screen, click the Settings (gear) menu. The screen will refresh.

Settings Menu



Note: To activate any changes made to the configuration under the **tv OS Setting tab**, always click the Settings (gear) menu on the TV.

contact cps support

Outstanding "Anytime" Assistance for All of Your Questions

Whether you need a quick answer, want to see a demonstration, need more detailed instructions, or have a big challenge to solve that is specific to your facility, the CPS Support Team is ready to help! Send us an email and we will respond promptly.

support@cps.golf

United States Technical Support Line

724-270-0200

International Technical Support Line

+31 20 450 99 81

From 9:00 to 21:00, Central European Time, or press the pager option.

About Club Prophet Systems

For over 26 years, Club Prophet Systems has designed fully integrated golf management software systems for point-of-sale (POS), food and beverage (F&B), customer history and member management with billing and online statements, real time tee sheet scheduling and online tee time reservations, email marketing, mobile solutions, integrated credit card processing, reporting, inventory, and much more. Serving over 1,700 facilities in 16 countries in 9 languages, CPS provides solutions for every type of golf facility, including driving ranges, public and private courses, resort and municipal destinations, multi-course operators and management companies. CPS can tailor a system to fit every need and budget. Learn more at www.ClubProphetSystems.com.